

# Widget Configuration

Design



# EnergyCommunity

[CommonHeader]

[Pinco Pallino](#)  
ACME corporation  
[Logout](#)

Done

Pubblico/Privato

Elimina cruscotto

## Cruscotto XYZ123 [Rinomina](#)

[Elimina](#)

**Temperatura** [Rinomina](#)

Elimina

Sensore 37 del piano 2 della portineria

Media su 1 ora ▼

Grafico

**Bacheca**

(nessuna impostazione)

**Consumo illuminazione magazzino**

Valore istantaneo (kW) ▼

Cerca nuovo sensore

Aggiungi

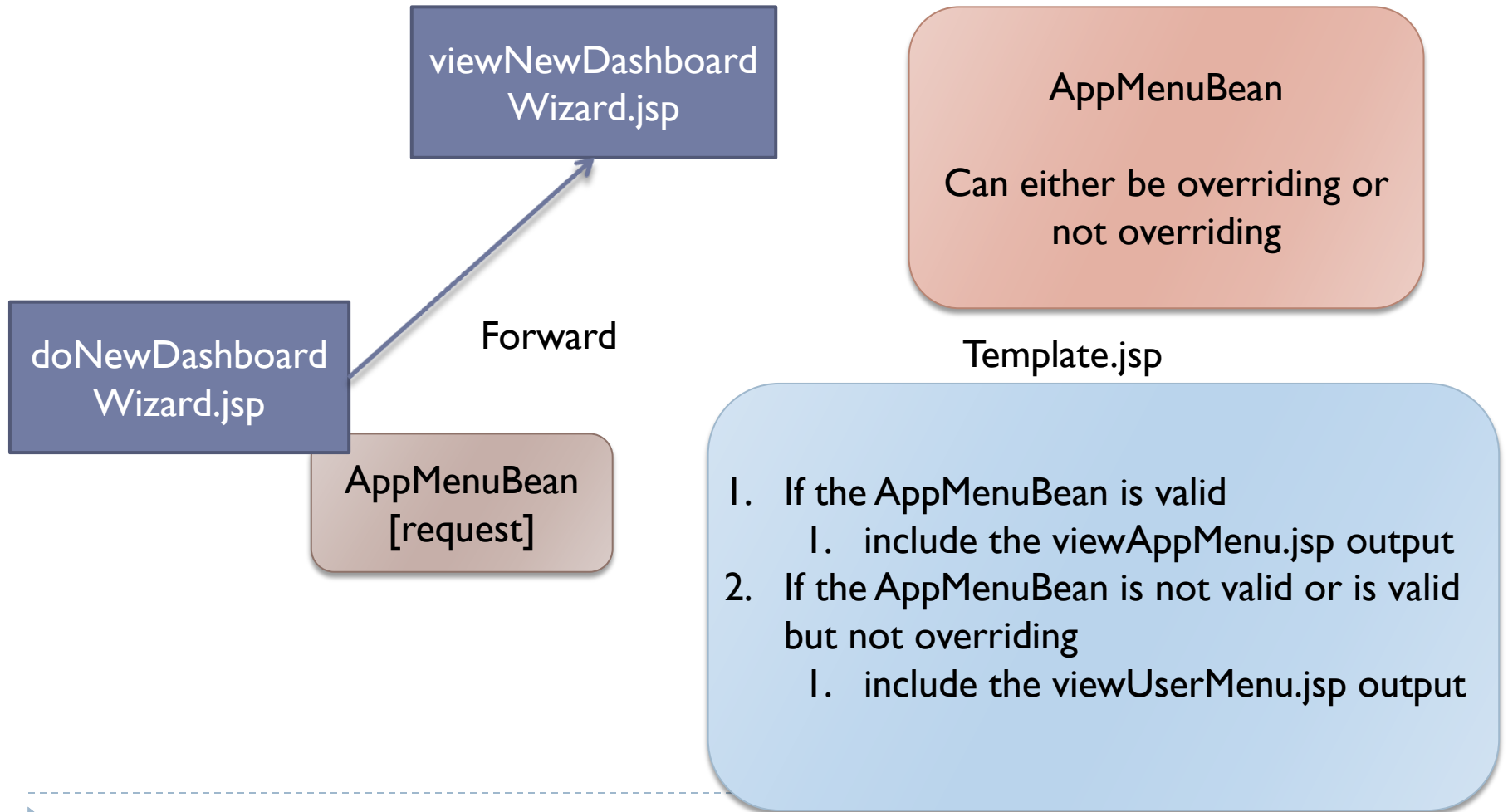
AJAX display of widget configuration parameters for all widgets associated to the dashboard

AppMenu

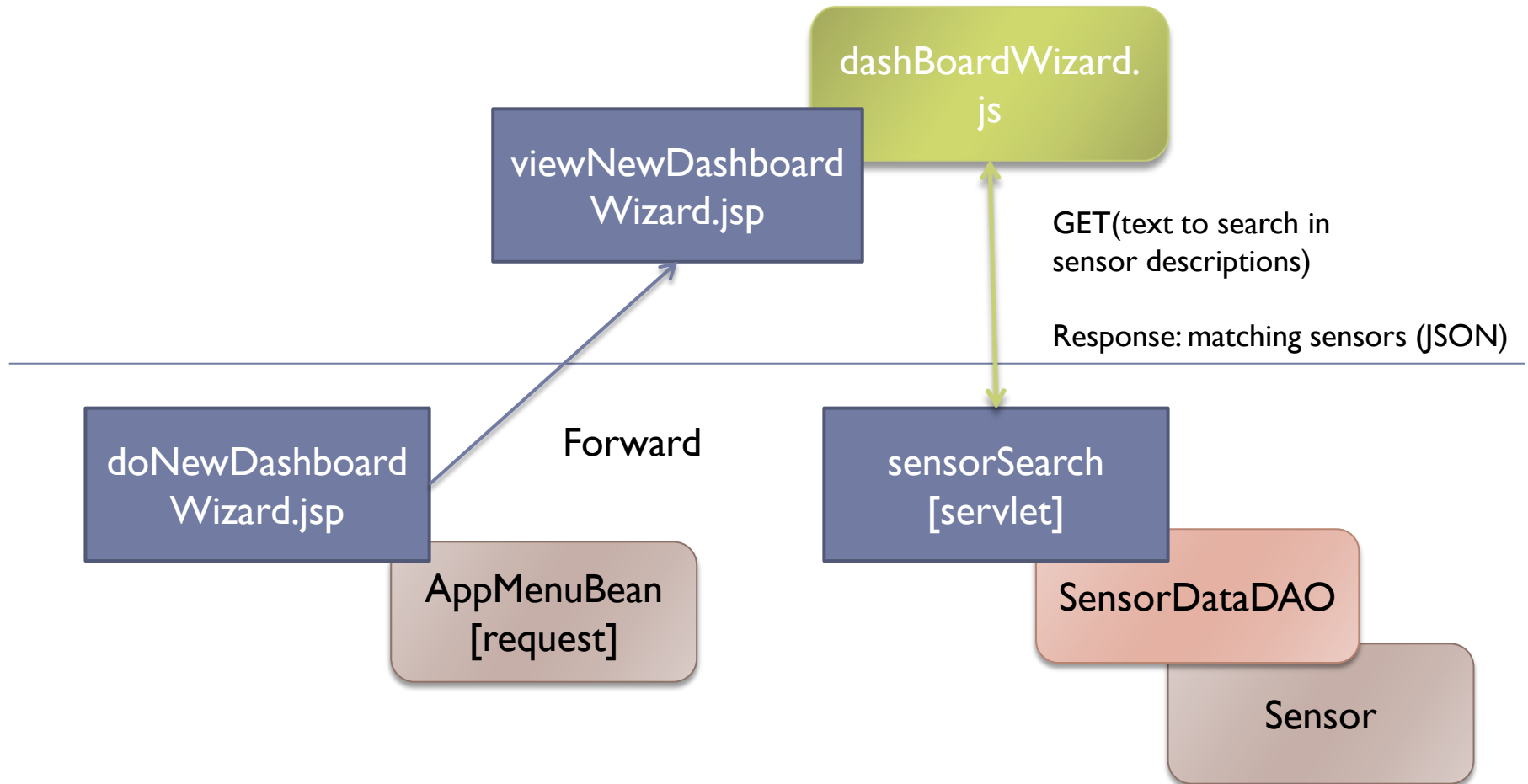
Sensor Search: AJAX suggest for sensors in the user company site whose description matches the inserted text

# App Menu – Switching Policy

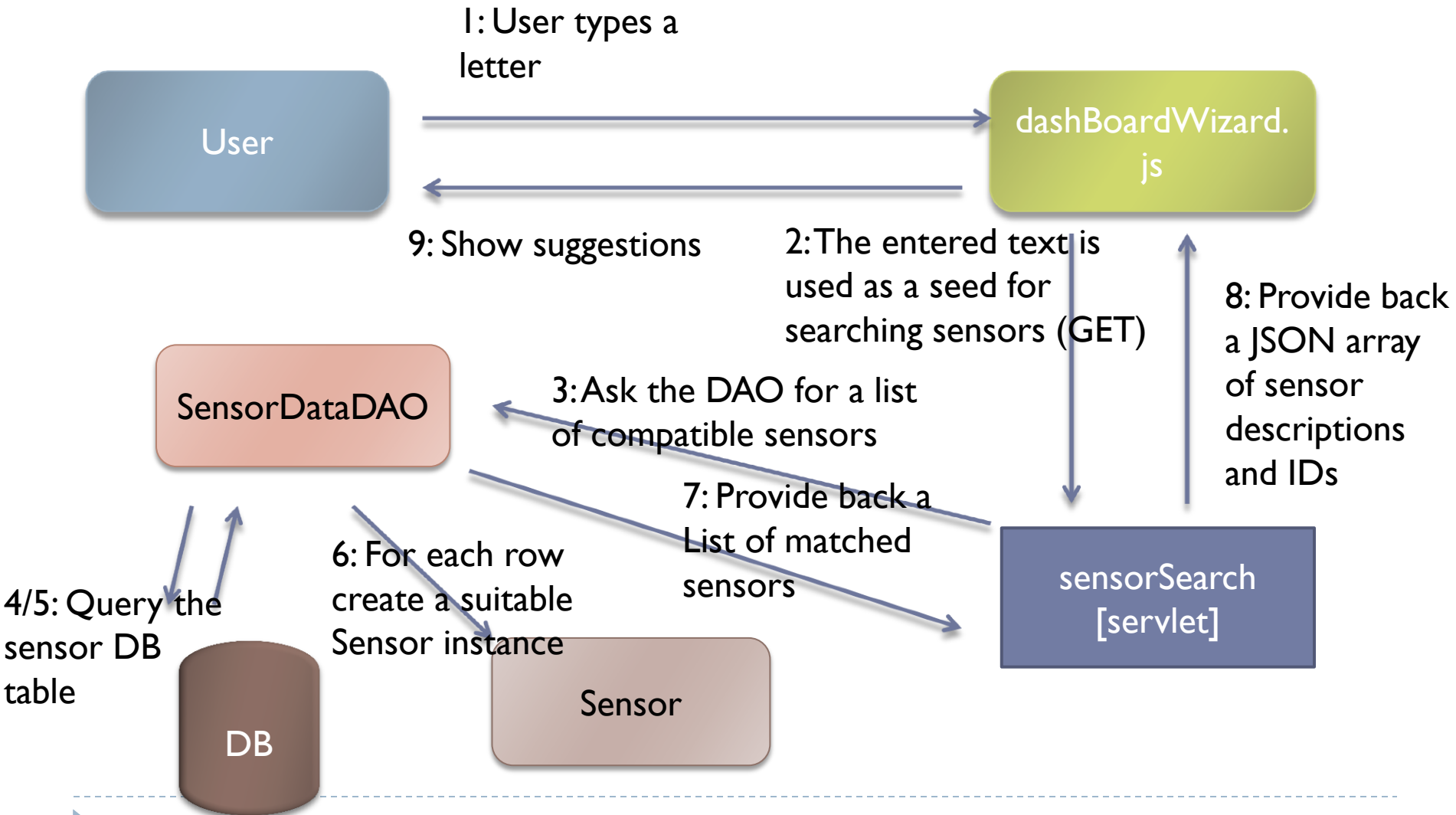
---



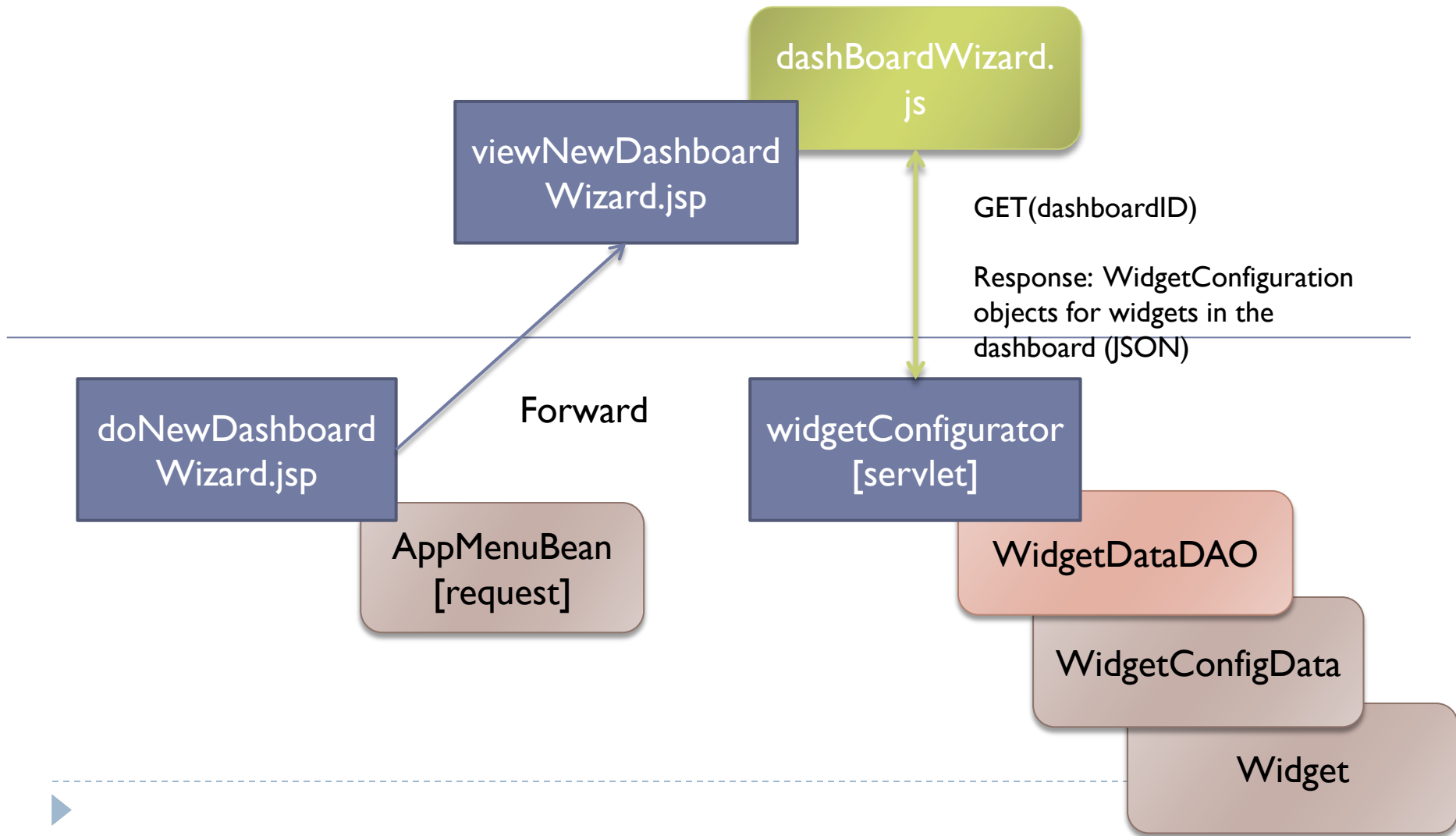
# Sensor Search



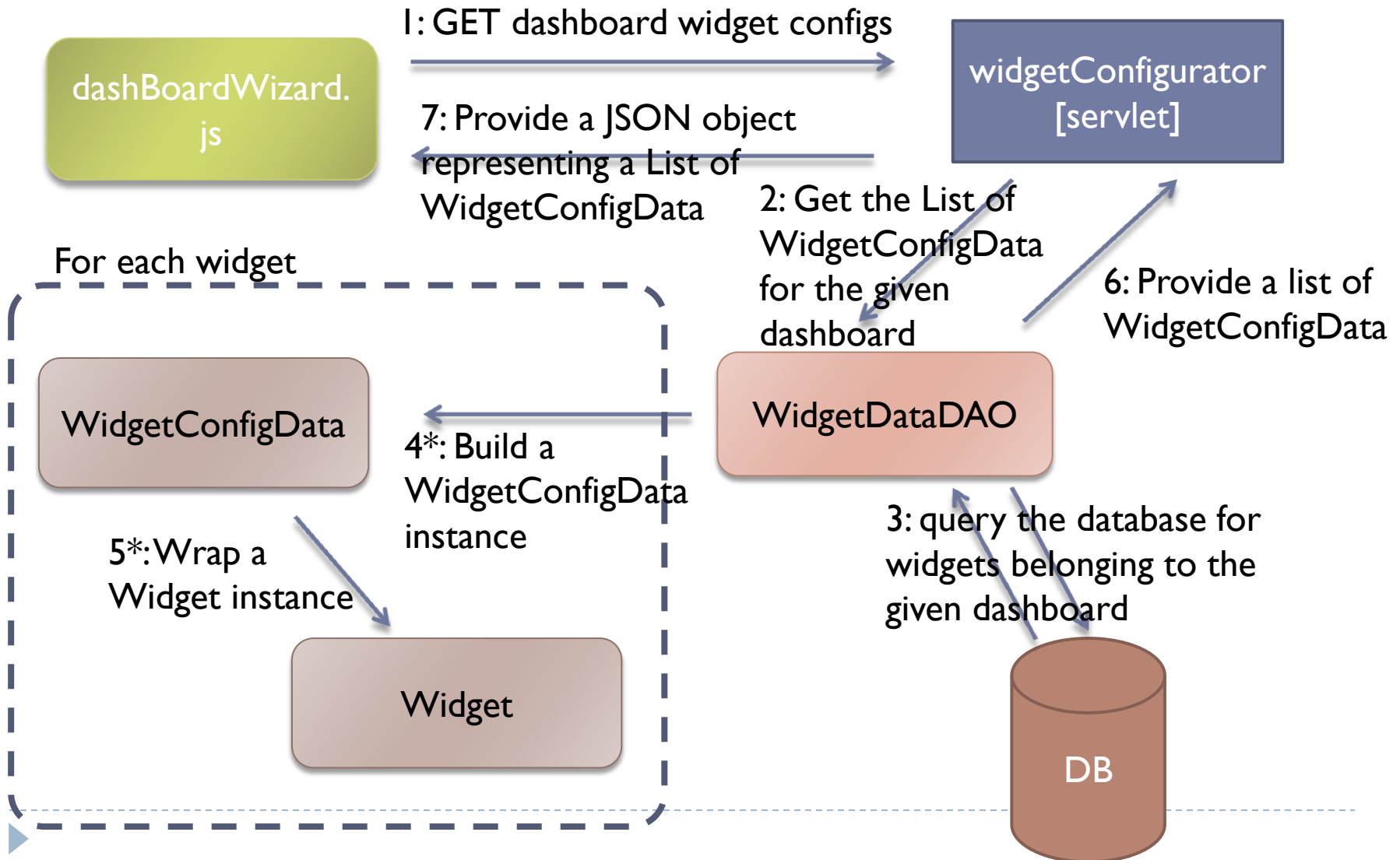
# Sensor Search - Interaction



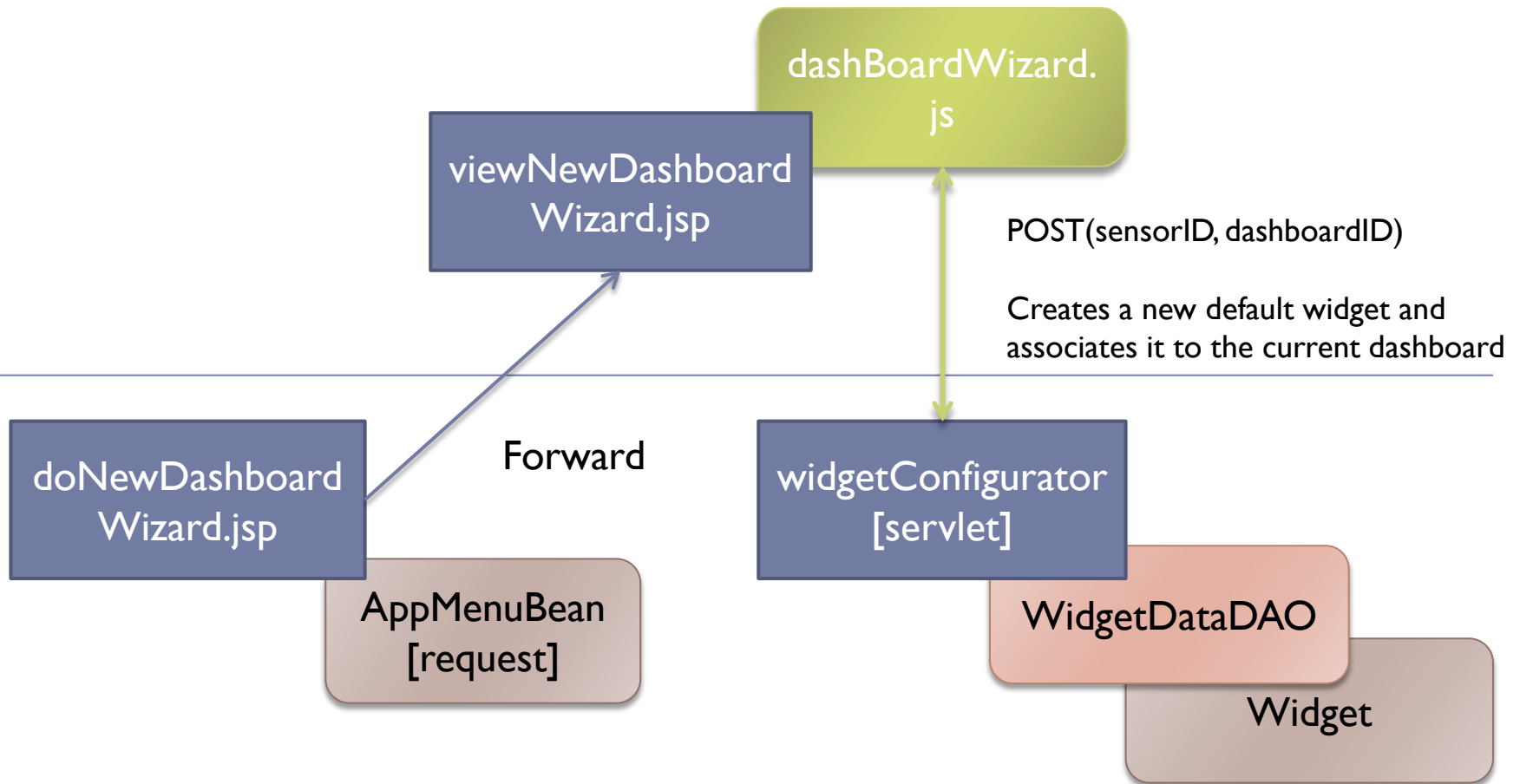
# Widget Configuration Display



# Widget Configuration Display - Interaction

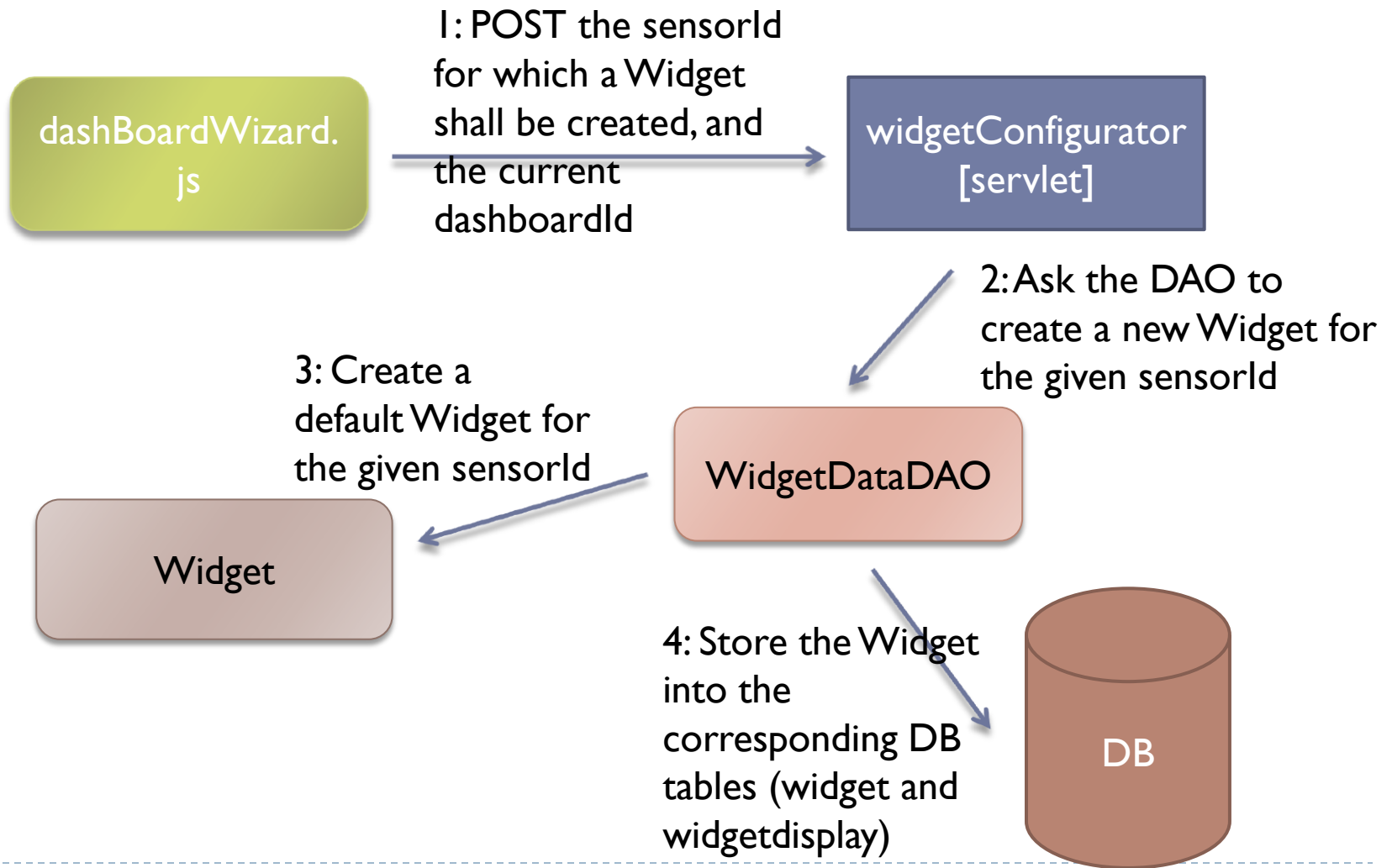


# Widget Creation

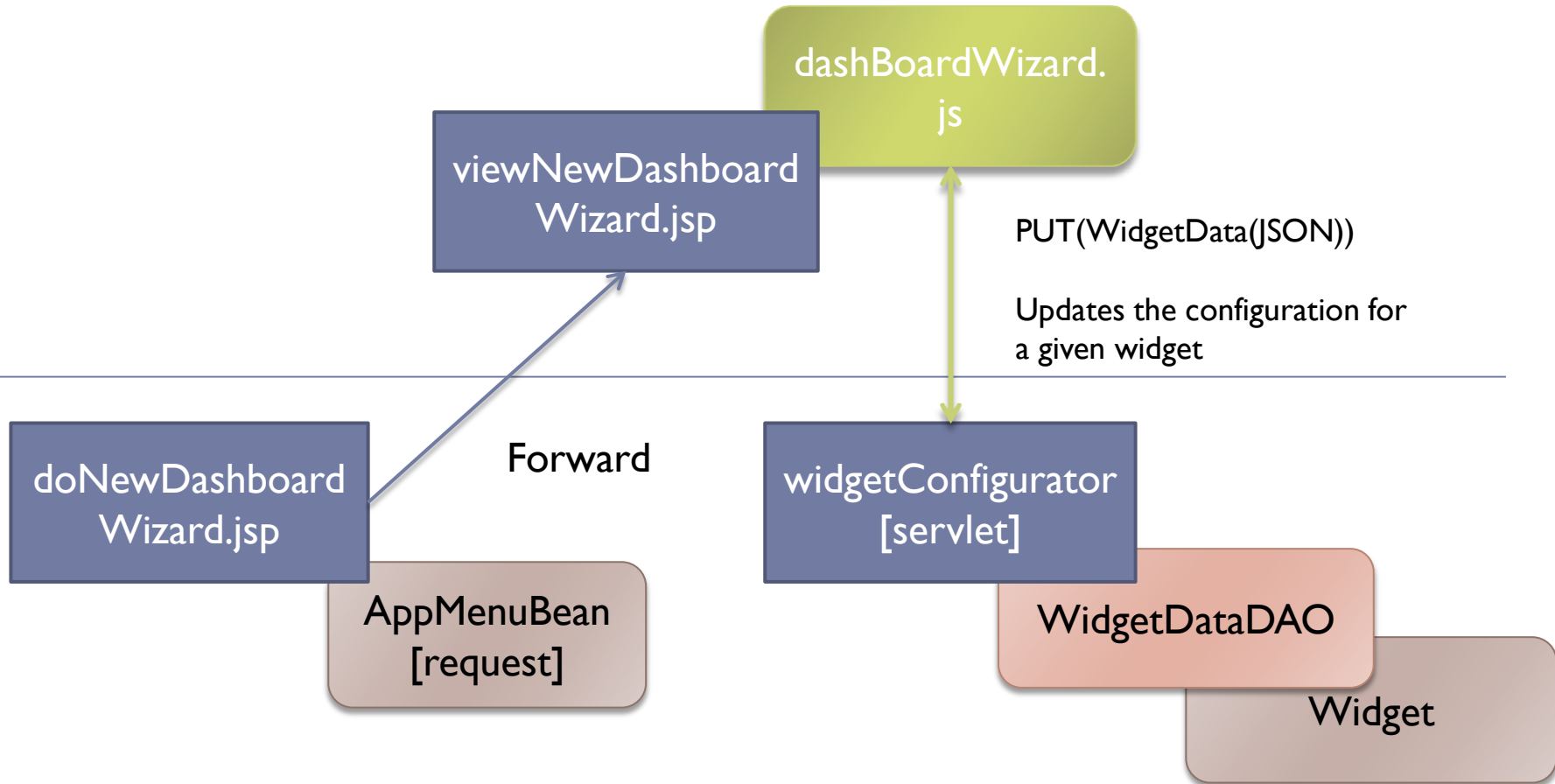


# Widget Creation - Interaction

---



# Widget Configuration Update



# Widget Configuration Update - Interaction

---

1: User changes some configuration parameter

dashBoardWizard.js

2: PUT JSON representation of the changed Widget

widgetConfigurator [servlet]

3: de-serialize the Widget

WidgetDataDAO

4: Ask the DAO to update the Widget

Widget

5: Store the updated Widget information

DB

